

California Voter's Choice Act



What is the Voter's Choice Act (VCA)?

Senate Bill 450 was signed by Governor Brown in 2016. This bill allowed selected counties to conduct all mail ballot elections and use full-service Vote Centers.

On June 6, 2017 the Sacramento County Board of Supervisors approved this new voting model for Sacramento County beginning with the June 2018 election.

Voter's Choice Act - Board Approval: June 6, 2017



What does this mean to me?

VOTE BY MAIL

- Every registered voter in Sacramento County will receive a ballot in the mail
- It's easy to return your voted ballot
 - By mail
 - In a Drop Box
 - At a Vote Center
 - Even at the Elections Office at 7000 65th Street
- Ballots are processed beginning 10 days before Election Day
- Results are released at 8:00 p.m. Election Night



What does this mean to me?

YOUR BALLOT COUNTS

Make sure your ballot counts:

- Mark your ballot clearly
- Sign your ballot envelope
- Return your ballot on or before Election Day

Check your ballot status at:

www.elections.saccounty.net

What does this mean to me?

VOTE CENTERS

- Some locations are open 10 days before the election
- All locations are open the weekend before the election and will be open on Election Day
- Vote at any Vote Center – Your Choice

What does this mean to me?

VOTE CENTERS

- Services available at the Vote Center:
 - *Register, update address, or change your party*
 - *Vote in person or drop off your ballot*
 - *Get a replacement ballot*
 - *Get language assistance*
 - *Use the accessible ballot marking device*

What does this mean to me?

BALLOT DROP BOXES

Drop your ballot at a Ballot Drop-off location through Election Day

Drop Boxes are:

- Secure, accessible, and locked
- Conveniently located
- Open during regular business hours through Election Day

The drive-thru Ballot Drop Box at the Election Office is open 24 hours/day until 8:00 p.m. on Election Night at 7000 65th Street in Sacramento.

Path to Vote Centers



Why did Sacramento County adopt the Voter's Choice Act?

- More voting opportunities that fit everyone's lifestyle
- Cost savings, improved efficiency and use of resources
- 64% of our voters are already Permanent Vote by Mail voters

Polling Place Model vs. Vote Center Model

Polling Place	Vote Center
1 - Location to vote in person	78 - Locations to vote in person
1 - Accessible Voting Machine	3 - Accessible Voting Machines
13 - Available hours for voting in person at a polling place	93 - Available hours for voting in person at a Vote Center
5 - Poll Workers	8 - Vote Center Workers, extensive training
16 - Ballot Drop-off locations open	52 - Ballot Drop-off locations open

Sacramento County's Vote Center Location Requirements by law

- Vote Centers open for 11 days: **16**
- Vote Centers open for 4 days: **78**
(16 Original + 62 additional Vote Centers)
- Ballot drop-off sites open for 29 days: **52**

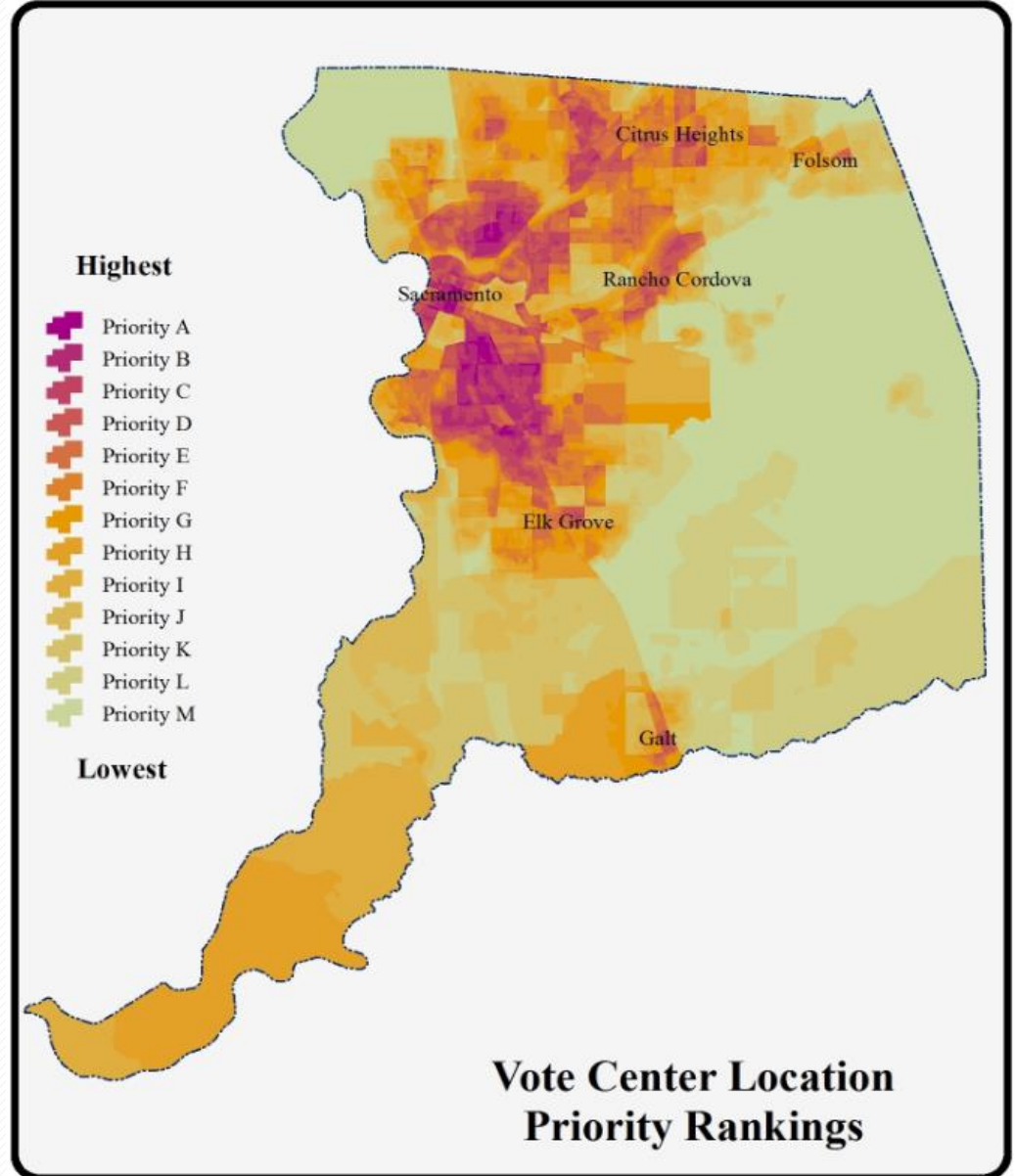
Potential VC locations are based on

Proximity to:

- Public transportation
- Communities with low Vote by Mail usage
- Population centers
- Language minority communities
- Voters with disabilities
- Low rates of vehicle ownership
- Low income communities
- Non-registered eligible voters
- Isolated communities

And

- Access to accessible and free parking
- Distance and time a voter must travel
- The needs of voters with disabilities
- The need for mobile vote centers



YOU CAN NOW VOTE:

- How you want
- When you want
- Where you want



YOUR
voice,
YOUR
choice

Questions

Outreach Division

Voter-outreach@saccounty.net

(916) 875-6512

For more information, visit our website at:

www.elections.saccounty.net

